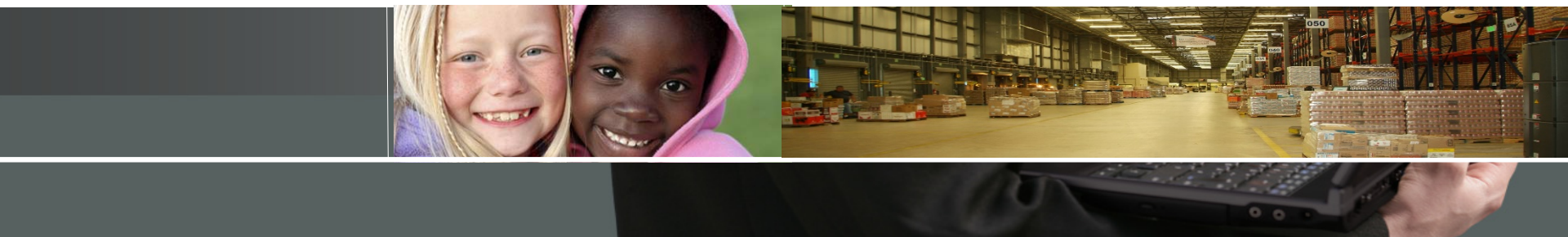




DMAG™ MDM Solution for Birla Group
July 29, 2019

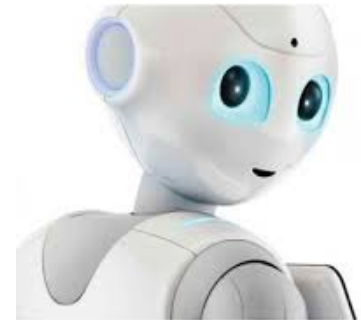


Agenda

- Our Understanding:
 - ✓ Project Scope
 - ✓ MDM Requirements
- DMAG™ Solution Overview
- DMAG™ Product Demo
- Project Costing & Timeline
- Next Steps

SAP® Certified
Integration with SAP HANA®

DMAG™

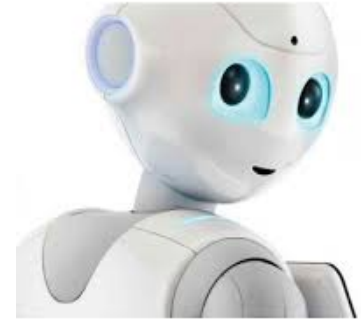


MDM Scope Validation (with Birla)

- Customers and Vendors – Business Partners
- Materials Master & Quality – Products
- BOMs and Recipes
- PE, MRP, and APO Data
- Contracts and Pricing
- G/L, Profit Centers, and Cost Centers
- Transactional Data
 - Sales Orders
 - Purchase Orders
 - Inventory Balances
 - G/L Balances
 - A/R Balances
 - A/P Balances
 - Asset Balances

SAP® Certified
 Integration with SAP HANA®

DMAG™



#	Requirement Types	Requirements in Detail	Possible Y / N	Demo
1	Vendor Creation	A Web form for new vendors to enter their details (Name, PAN, Address, GSTN, Bank Details etc.)	Yes	Y
		Create Vendor credentials for the Web form for him to login & fill his details	Yes	N
		Ability for the vendors to edit certain details in future e.g. Bank account No	Yes	N
		Ability for the vendor to attach multiple docs in the web form	Yes	N
		A unique identification no. for each Web-form filled & submitted by the Vendor	Yes	Y
		Ability to check automatically with the govt. database PAN, TIN & GSTN details	Yes	N
		Workflow with one or multiple approvers for approving the Vendor details before it gets created in system	Yes	N
		Auto reminders to approvers in case of pending approvals	Yes	N
		Ability for the approvers to add certain data to the Web-form (e.g. Payment Terms)	Yes	N
		Ability for the approvers to return the form to the previous stage	Yes	N
		Duplicate Checks against the existing SAP database (e.g. Name, Mob No, PAN, GSTN etc.)	Yes	N
		Interface with SAP to push new/amended Vendor data for automatic Vendor creation in ERP	Yes	Y
		Interface from SAP to the Web form for updating ERP Vendor Id	Yes	Y
		Auto Notification to the Vendor/Requestor after Vendor creation/updation in ERP	via mail	N
		Ability to define & build new Business Logics	Yes	N

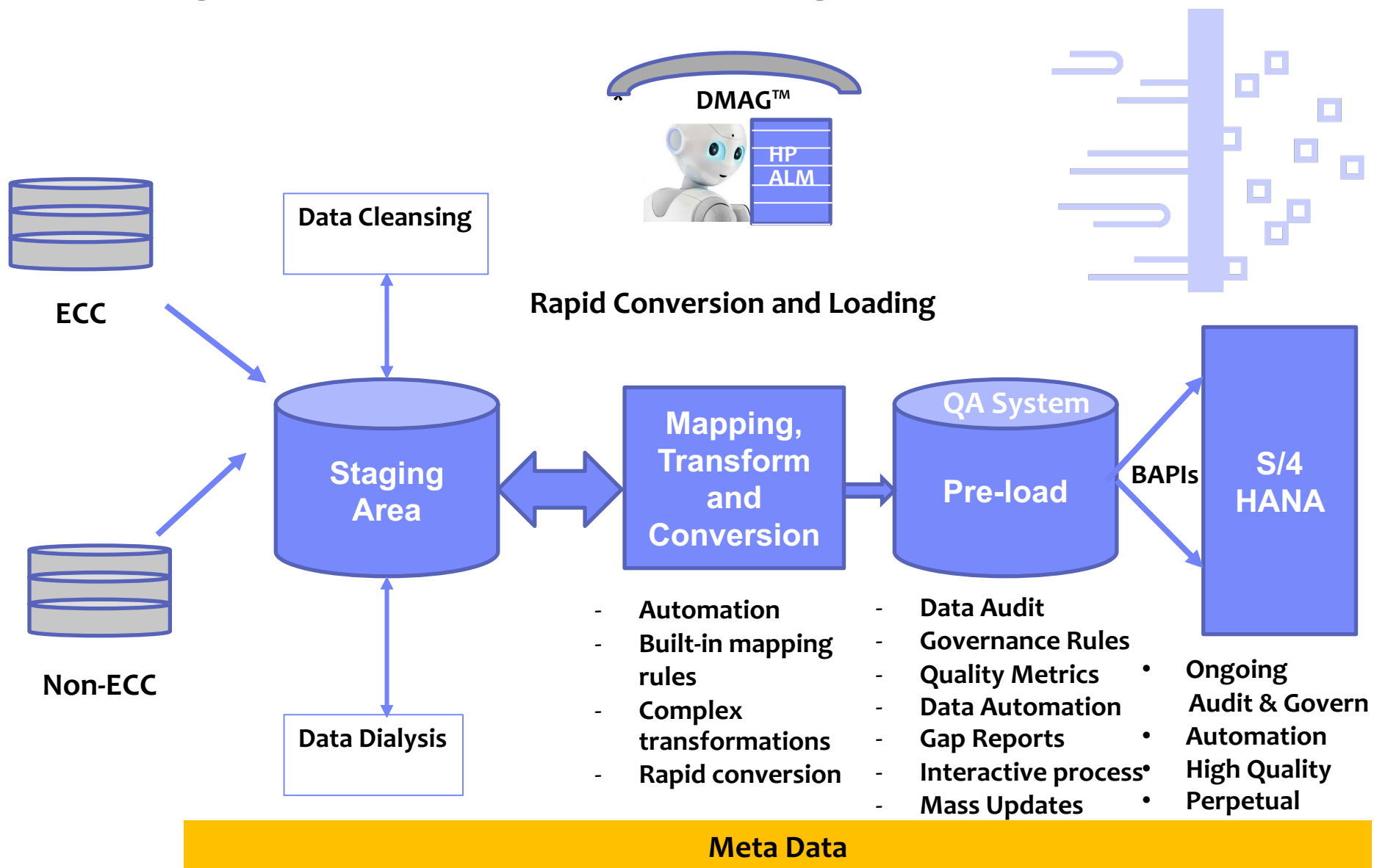
#	Requirement Types	Requirements in Detail	Possible Y / N	Demo
2	Customer Creation	A Web form for new Customers to enter their details (Name, PAN, Address, GSTN, Bank Details etc.)	Yes	Y
		Create Customer credentials for the Web form for them to login & fill their details	Yes	N
		Ability for the Customers to edit certain details in future e.g. Mob No, Email Id	yes	N
		Ability for the Customer to attach multiple docs in the web form	yes	N
		A unique identification no. for each Web-form filled & submitted by the Customer	yes	Y
		Ability to check automatically with the govt. database PAN & GSTN details		N
		Workflow with one or multiple approvers for approving the Customer details before it gets created in system	yes	N
		Auto reminders to approvers in case of pending approvals	yes	N
		Ability for the approvers to add certain data to the Web-form (e.g. Credit limits, Business Unit)	yes	N
		Ability for the approvers to return the form to the previous stage	yes	N
		Duplicate Checks against the existing SAP database (e.g. Name, Mob No, PAN, GSTN etc.)	yes	N
		Interface with SAP to push new/amended Customer data for automatic Customer creation in ERP	Yes	Y
		Interface from SAP to the Web form for updating ERP Customer Id	yes	Y
		Auto Notification to the Customer/Requestor after Customer creation/updation in ERP	via mail	N
		Ability to define & build new Business Logics	yes	N

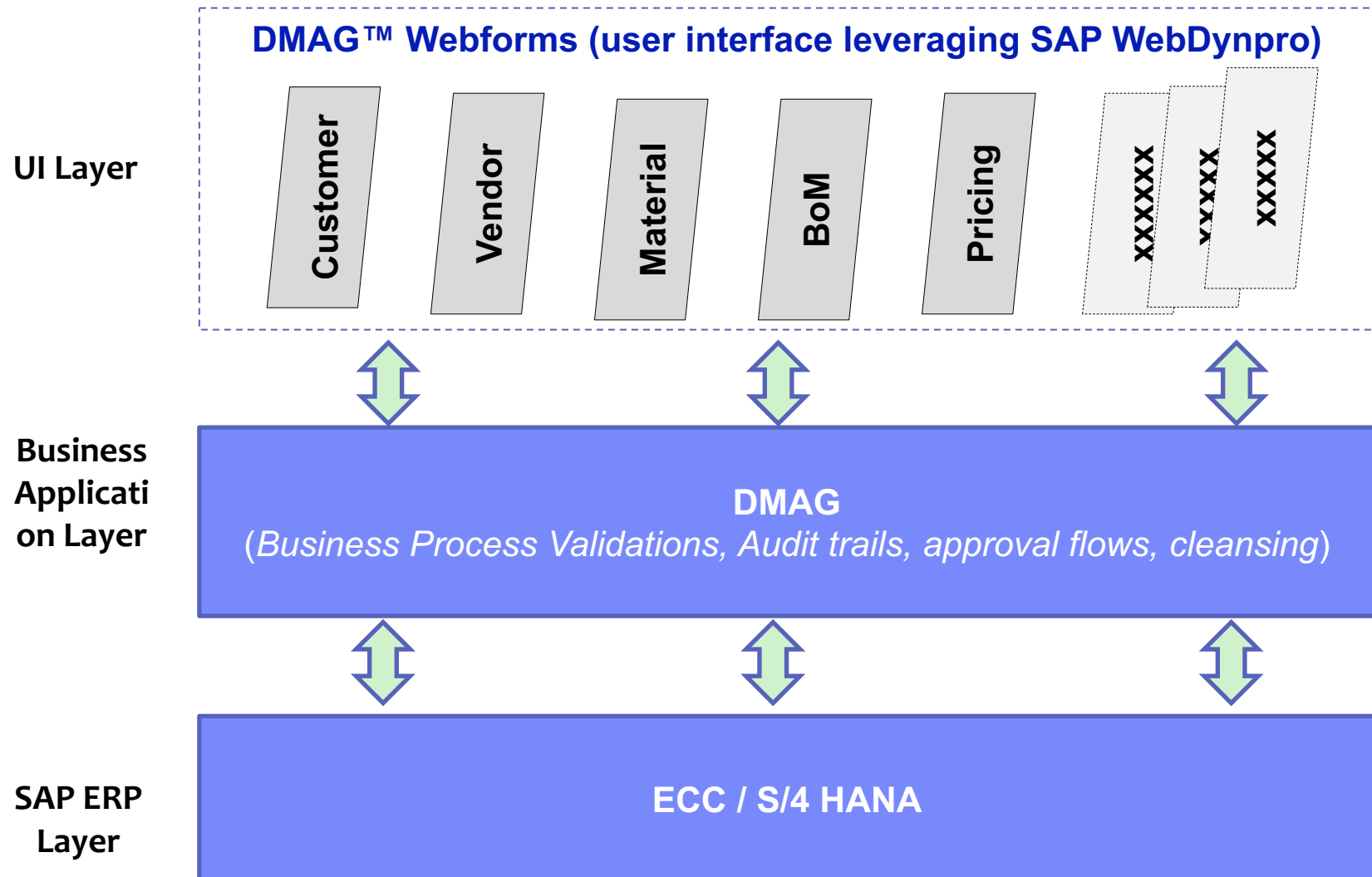
#	Requirement Types	Requirements in Detail	Possible Y / N	Demo
3	Material Master	Web based Material Master creation form	yes	Y
		Ability of the system to propose existing Material (from ERP) while entering details of Material during its creation	yes	N
		Duplicity check of existing Material with the Materials which exist in the current ERP while creating Material	yes	N
		Semantic based recognition/duplicacy checks (e.g. 5 cm vs 50 mm, minor variation in desc with & without dot)	yes	N
		Workflow with one or multiple approvers for approving the Material details before it gets created in system	yes	Y
		Auto reminders to approvers in case of pending approvals	yes	N
		Interface with SAP to push new/amended Material data for automatic Material creation in ERP	Yes	N
		Interface from SAP to the Web form for updating ERP Material Id	yes	N
		Auto Notification to the Requestor after Material creation/update in ERP	yes	N
		Ability to define & build new Business Logics	yes	N

#	Requirement Types	Requirements in Detail	Possible Y / N	Demo
4	Data Quality Workbench (For existing Data)	Pre-defined logics & models to check, de-duplication, accuracy, validness & completeness of the information of the Master records	Exists in DMAG	Y
		Ability to define & build new Business Logics	----do----	Y
		Workbench/Interface for users to quickly correct/update the Master records	----do----	N
		Ability to pull certain transactional data related to the Master data record (e.g. for Vendor open balance, for existing Inventory etc.) onto the Workbench to enable the ease of decision making. E.g. ((i) If there is an open amount in Vendor Account, it cannot be directly closed without an action in ERP. (ii) If there are 2 duplicate Material Items, the record cannot be merged without Inventory movement))	----do----	N
5	Additional Features	Audit trail for creation & edit in Master Data	----do----	
		Ability to interface/connect with 3rd party applications	In principle yes	
		Inbuilt functionality of Email Verification, Mobile No verification in the tool	No	
6	Workflows for other Masters	Ability to create Customized Workflows for creation of additional Masters (e.g. BOM, Pricing etc.)	Yes	
7	Data Cleansing	One time "Data cleansing" activity	Yes	DMAG built-in feature

Data Management Solution for S/4 HANA Migration

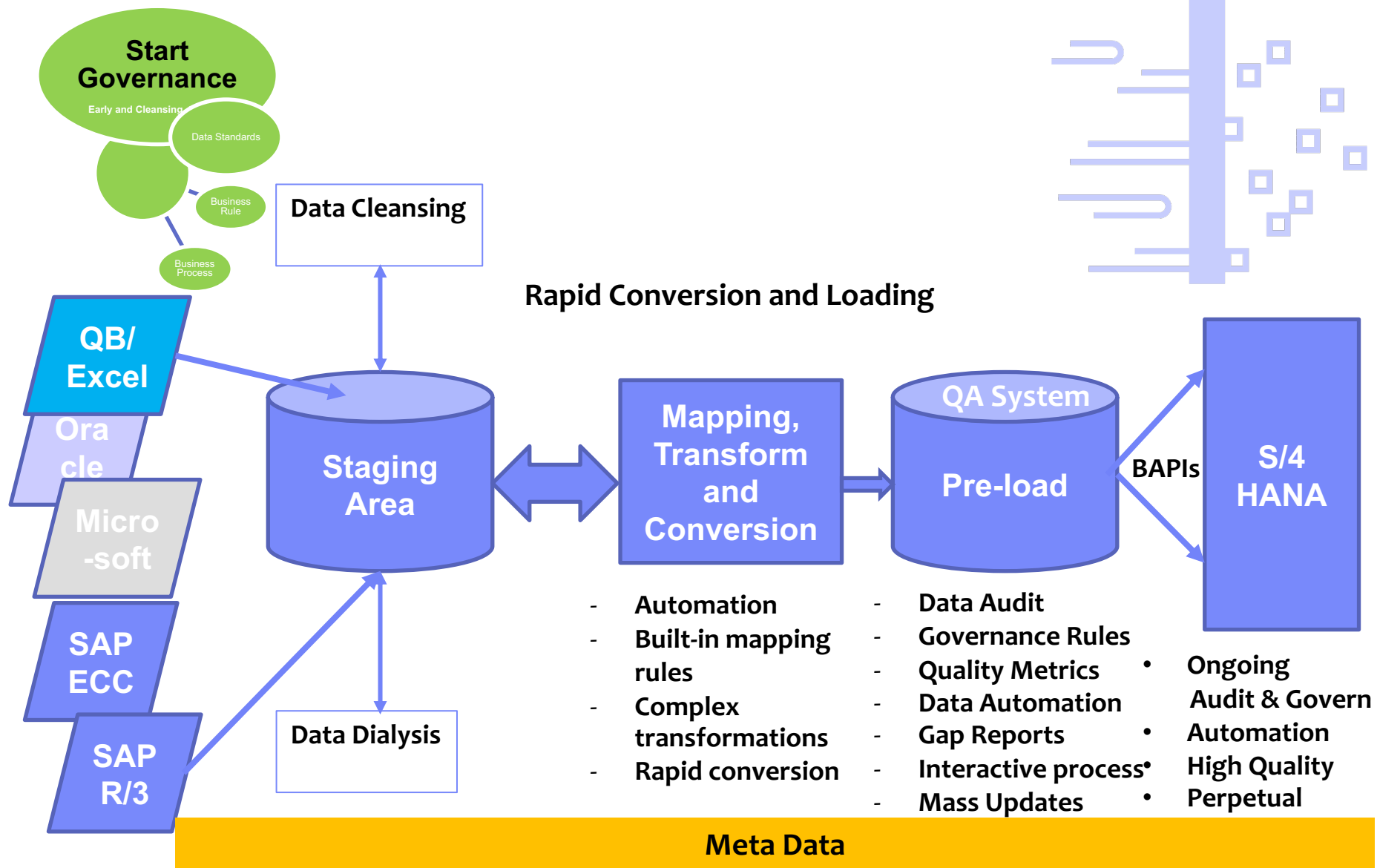
Business Rules Cockpit





DMAG™ Architecture – MDM Data Migration Solution

Business Rules Cockpit

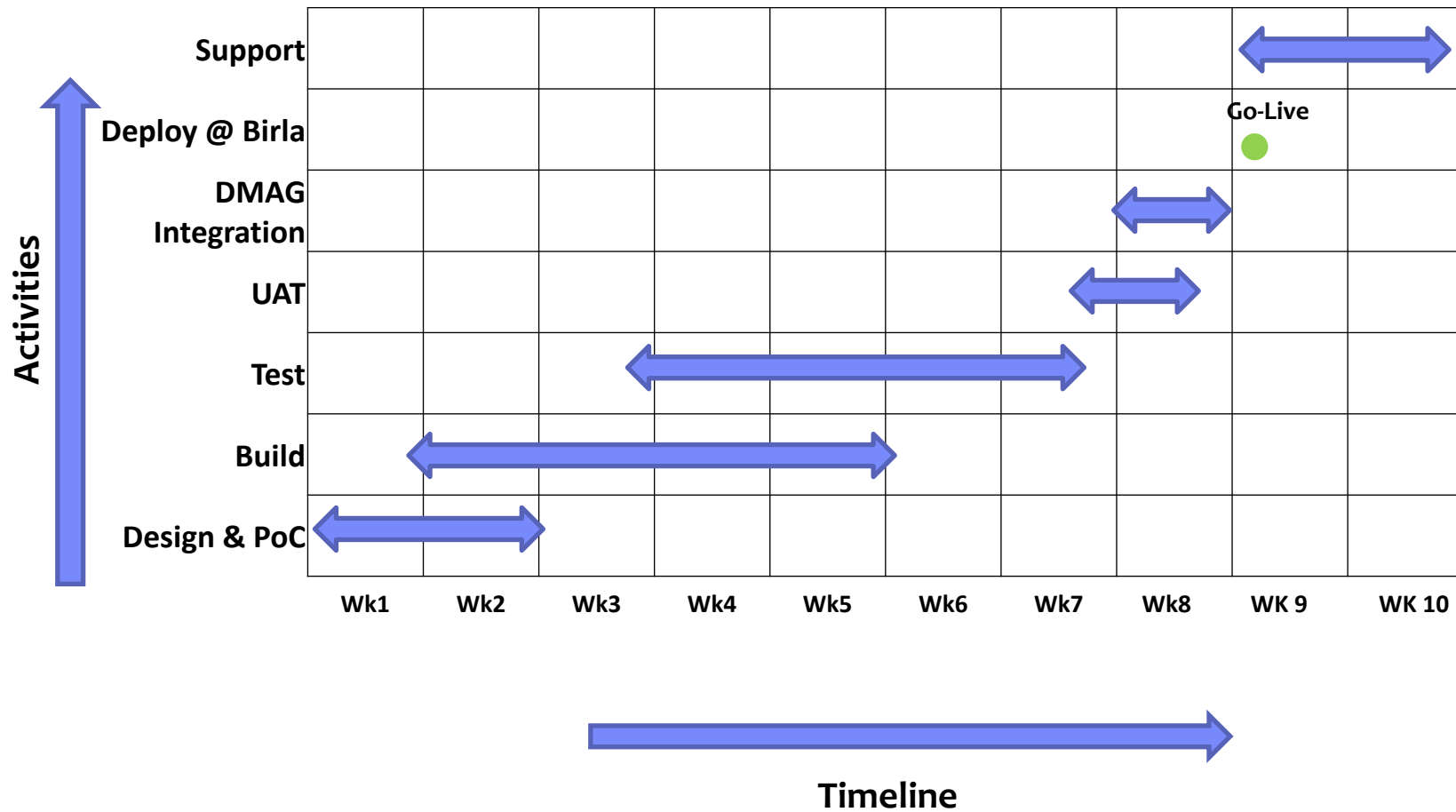


DMAG Value – Goes beyond data capture functionality

Functionality	Value
<ol style="list-style-type: none"> 1. Web Interface for Data entry (Customer, Vendor, Material, etc) 2. Data Cleansing 3. <i>Data Audits</i> 4. Supports mapping, transformation & conversion while migrating from ECC or Non-SAP systems (MS/ Oracle / JD Edwards, etc) to S/4 HANA 5. Data Inconsistencies report during migration between source and target S/4 HANA systems 6. Data Quality Metrics & Data Governance 	<ul style="list-style-type: none"> ▪ 100% Error Free Data ▪ High quality Product Information Management (PIM) ▪ The effort and timeline reduced by HALF – Upto 50% overall effort reduction ▪ Speed to Master Data Implementation by 50 - 60% ▪ Optimizes Master Data Stewards FTE – ON GOING - 60% FTE Synergy Savings

Note: DMAG is Perpetual - can be used in SAP or S/4 HANA all Versions

Project Timelines



Project Costing & Timelines

Item	Cost / Timelines
Build functionalities for Current scope (Excel from Birla group refers)	8 Weeks
DMAG Licensing cost	INR 5,00,000.00

Note :Workflows for other Masters - To be taken up as Phase 2



MDM Birla Group
scope Phase 1

Q&A Next Steps

Contact: Badrish P Rao
Email: Badrish.Rao@visionsoft.com

Visionsoft Global
186, Princeton Hightstown Road
Ste: 14, Building: 4
Princeton, NJ 08550

Appendix