

DMAG TM

Introduction

DMAG Features

Functionalities

1

Data Dialysis, Cleansing, Audit and ongoing Enrichment & Corrections

An audit report for all the master data inconsistencies is generated based on custom client specific business & SAP Standard rules. Business Rules are maintained and executed to govern the master data on-going. The inconsistencies are cleansed and corrected automatically.

2

Data Migration, Transformation, and Conversion for Greenfield S/4 HANA implementation

Data is migrated and converted from various source legacy systems such as Quick Books, Spreadsheets, Oracle, Microsoft, Great Plains, ECC & R/3 and transformed, mapped and converted into S/4 HANA format and load it rapidly into S/4 HANA target system for faster, business ready, and smooth go-live

3

Data Carve Outs / Data Extractions for Mergers/ Divestitures/Acquisitions

Data is carved out and sectioned into multiple SAP landscapes incase of divestures, and merged/consolidated from multiple ECC or S/4 HANA instances incase of mergers and acquisitions

4

Data Retention & Archiving

Allows huge lakes of unproductive data to be extracted and archived in a separate server for easy retrieval and display as needed including storage on DB2/ ZOS systems. It will provide compelling value of optimizing expensive HANA SAP resources. Data is archived using a patented technology and displayed as needed.

5

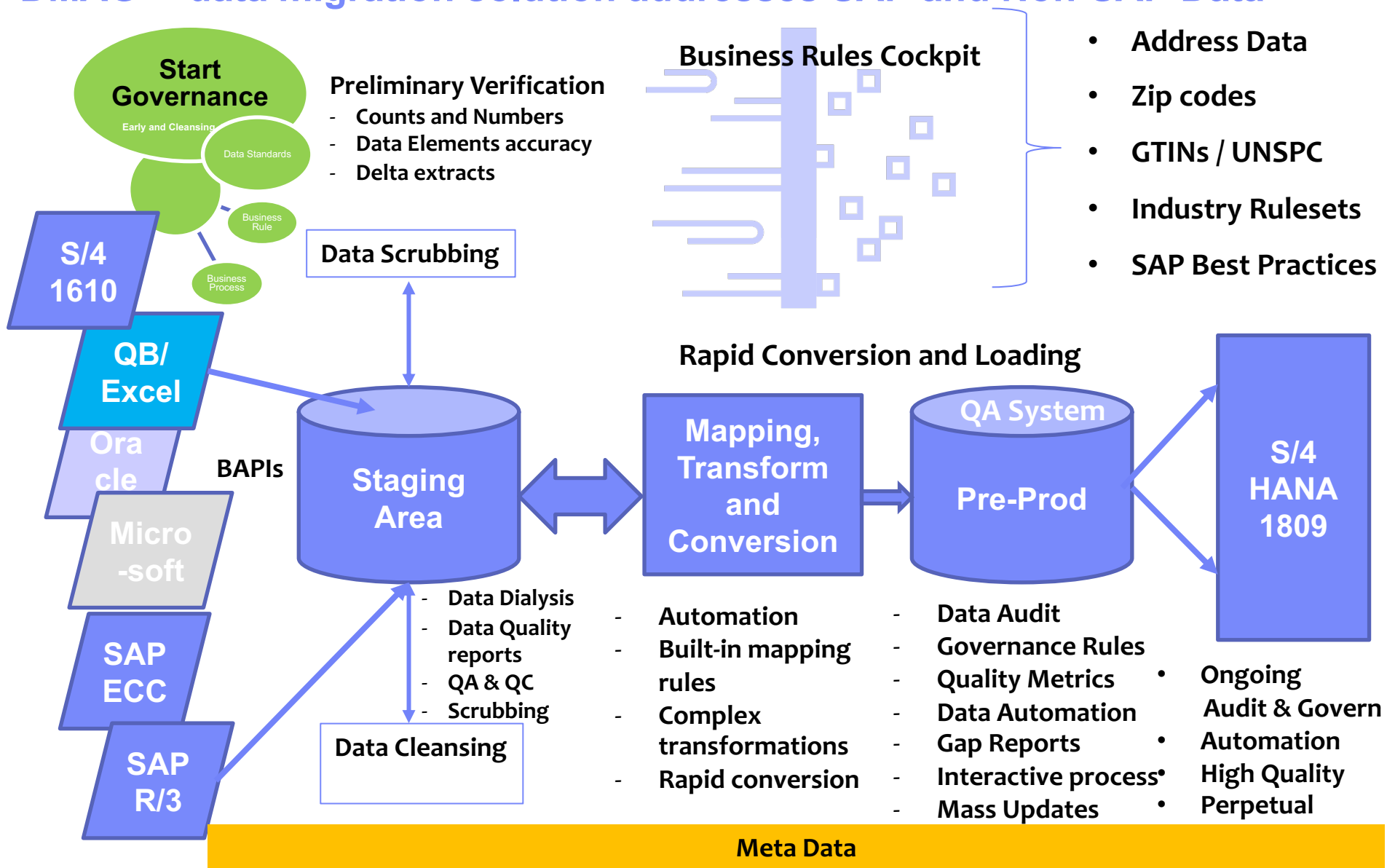
Master Data Management (MDM) & Governance

Allows external parties or internal team to maintain Customer / Vendor / Material/ other masters captured through web forms and populating SAP or S/4 HANA database including validations, duplication checks, & workflow and approvals for creation, maintenance and changes.

DMAG TM

Data Migration

DMAG™ data migration solution addresses SAP and Non-SAP Data



DMAG TM

Data Cleansing

DMAG provides compelling value by automating Data inconsistencies in S/4 HANA and making the data error free, business ready, and compatible with S/4 HANA Framework

S/4 Add-On

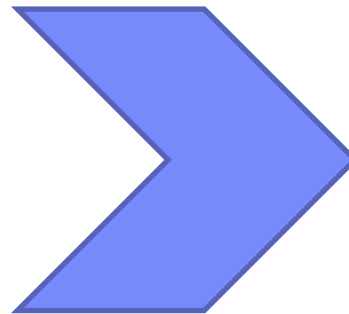
***DMAG™**



**S/4
Enterprise
(1809)**

**S/4 HANA
1809**

- Add-on PAT File Installation
- User access to DMAG
- Set up security levels to run Remediations



- Business Data Verification
- Execute QA and Testing
- Pre-Post Quality Metrics
- Core Master Data
- Custom Tables and Data

Six sigma Quality Data

- Identification of inconsistencies
- Data Audit based on Business rules
- Build Complex Business Rules Using the DMAG Configuration Tables – Scalable
- Produce Portfolio of Inconsistencies
- Review with Stakeholders and prioritize - 1,2 and 3 for remediation
- Data Cleansing and Corrections
- Map, Transform and Automate Data Models
- Make data compatible with S/4 HANA 1809 framework
- Automation runs to achieve six Sigma Quality levels

DMAG TM

Master Data Management

External User



Webdispatcher
(secure layer)

DMAG™ Webforms (user interface leveraging SAP WebDynpro)

Customer

Vendor

Material

BoM

Pricing

XXXXXX
XXXXXX
XXXXXX

Webdynpro
/ SAP/ Excel
Upload

DMAG Staging Area

Business
Applicati
on Layer

DMAG

(Business Process Validations, Governance, Audit trails, Approval flows)

SAP ERP
Layer

S/4 HANA (or) ECC

DAMG offers following MDM capabilities:

- I) An Excel Master Data(MD) Upload for Customers, Vendors and Materials**
 - 1) Material Numbers, Characteristics, and Validations etc.
 - 2) Name, PAN, Address, GSTN, Bank Details etc.
 - 3) Duplication Check, Semantic Recognition, Accuracy, Validness & Completeness
 - 4) Exception Processing

- II) Staging Area processing for MD - Customers, Vendors and Materials**
 - 1) Requestor reviews all the records and ensure they are scrubbed / cleansed
 - 2) Initiates a request for approvals
 - 3) Reminders for approvals
 - 4) Monitors Rejections and Reprocess

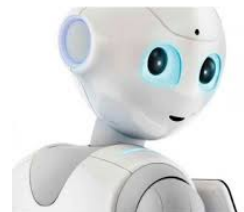
- III) Workflow with one or multiple approvers for approving the MD details before it gets created in system**
 - 1) Setting up Approval Hierarchy based on Material Type and Account Group
 - 2) Alternate Approvers & Delegate Approvers
 - 3) Approve the records to next level
 - 4) Reject the records to the requestor

- IV) Audit Trails, Workflows, and Automatic Creation of MD in the SAP system**

- V) Data Cleansing – One time Activity**

DMAG MDM Scope (overall)

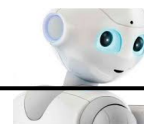
- Customers and Vendors – Business Partners
- Materials Master & Quality – Products
- BOMs and Recipes
- PE, MRP, and APO Data
- Contracts and Pricing
- G/L, Profit Centers, and Cost Centers
- Fixed Assets
- Internal orders
- Lease Contracts
- Treasury & Risk Master
- Location Master
- Transactional Data Balances
 - Sales Orders
 - Purchase Orders
 - Inventory Balances
 - G/L Balances
 - A/R Balances
 - A/P Balances
 - Asset Balances

DMAG™


DMAG provides compelling value by automating Data inconsistencies in ECC and making the data error free, business ready, Complete, and compatible with Industry Standards

- ✓ **Portfolio of Inconsistencies:** DMAG will identify the inconsistencies based on the Client Business rule set, Data Model integrity in ECC and based on Industry Best Practices.
 - ❑ DMAG automates the master data inconsistencies by each object – inconsistencies with existing data based on the proven business rules, new data Model with Business Partners, and New fields introduced in Industry framework.
- ✓ **Business Rules** are customized and Industry Driven - Easily Configurable and Scalable
- ✓ **The resolution and remediation will be via four methods:**
 - ❑ **Business Rule Based Resolution** – E.G: for all external procured materials, procurement type is F
 - ❑ **Interactive Session** – Fixes will be resolved via Guided Master Data (GMD) process.
 - ❑ **Mass Updates** - Fixes will be resolved via download and upload process
 - ❑ **S/4 HANA Automation** – Map, Transform and Automate based on intelligence tool has ECC to S/4 HANA
- ✓ **DMAG is Perpetual** - It is an ongoing assessment and proactive Governance tool to make the data error free. The Data audit can be conducted daily or monthly based on frequency and volume of transactions. It will automate the Governance framework.

DMAG™ is a Robotic Data Management Tool that automates Master Data Management - Reduces the effort and time by 50% and Scalable for Roll Out


Roles
System
Initiator
Requestor
Approver
System
Steps
1
Excel MD Upload

2
Error Processing

3
Staging Process

4
Approvals/ Rejections

5
MD Creation in SAP
ECC EhpX
Data Management & Governance
Data Maintenance and Governance in ECC system
1
Data Creation & Maintenance

- Excel Data Upload
- Error Processing and Scrubbing

2
Data Error Processing

- Data Scrubbing based on the Validation Rules

3
Requestor is the Holy Grail of the data

- End to end Processing of Master Data

4
Data Approvals & Rejections

- Approvals and Rejections based on Approval Hierarchy

5
MD Creation in the System

- Creation of MD with 100% Quality Records

6

- Data Governance - Remediation** based on business rule sets
- Ongoing MD Governance based on the Business Rules Set

Master Data Validations 4 Customer Master Proof of Concept and scalable for Roll out

Customer Master	Data Element	Reason for Exception	Error Message Display
1	Account Group	Account group shouldn't be blank	Enter valid Account Group
		Entered account group must be maintained in SAP	Enter valid Account Group
2	PAN Number	Pan number should have 5char/4Numeric/1char	'Enter Valid Pan No. In the format 5char/4Numeric/1char'.
		If any customer exist with same PAN number and suppose if try to use the same PAN number(i.e.).customer exist with same PAN number	PAN number exist in Database for customer
		use same PAN number but not created any customer number with this	PAN number 'exist in Staging Area for customer
		If PAN number is blank	Provide PAN No. for Domestic customer
3	GST Number	If any customer exist with same GST number and if try to use same GST number(i.e.). customer exist with same GST number	GST number exist in Database for Customer
		If GST number is duplicated at staging area in the sense suppose if try to use same GST number but not created any customer number with this PAN number	GST number exist in Staging Area for Customer
		Format of GST number	Enter Valid GST No. In the format 2Numeric/PAN/1Numeric/1char/1alphaNumeric
		Suppose if country is INDIA and length of GST should be 15 characters and PAN number should match with from 4th character and before last two characters of GST number	Enter Valid GST No. against PAN Number
		If GST Number is blank	Provide GST No. for Domestic customer
4	Postal code	Postal code check based on country key and region	Specify length with postal code '6'
5	Name	Check entered NAME1,NAME2 exist in SAP -ADRC in table	Same Customer name already exist in database
6	Street	Check if street 1, street 2 , street 3 against ADRC table in D/B	Same Customer address already exist in database
		Check if street 1, street 2 , street 3 against /VSDMAG/Zcus_hil table in D/B	Same Customer name already exist in Staging Area

Master Data Validations 4 Vendor Master Proof of Concept and scalable for Roll out

Vendor Master	Data Element	Reason for Exception	Error Message Display
1	Account Group	Account group shouldn't be blank	Enter valid Account Group
		Entered account group must be maintained in SAP Account group mast	Enter valid Account Group
2	Mobile Number	Enter Mobile No. for Domestic Vendor	Mobile number is mandatory
3	PAN Number	Pan number should have 5char/4Numeric/1char	'Enter Valid Pan No. In the format 5char/4Numeric/1char'.
		If any vendor exist with same PAN number and suppose if try to use the	PAN number exist in Database for Vendor
		If PAN number is duplicated at staging area in the sense suppose if try to	PAN number 'exist in Staging Area for Vendor
		If PAN number is blank	Provide PAN No. for Domestic Vendor
4	GST Number	If any vendor exist with same GST number and if try to use same GST nu	GST number exist in Database for Vendor
		If GST number is duplicated at staging area in the sense suppose if try to	GST number exist in Staging Area for Vendor
		Format of GST number	Enter Valid GST No. In the format 2Numeric/PAN/1Numeric/1char/1alphaNumeric
		Suppose if country is INDIA and length of GST should be 15 characters a	Enter Valid GST No. against PAN Number
		If GST Number is blank	Provide GST No. for Domestic Vendor
5	Bank Key	Entered bank key should exist in the BANK Master data	Bank key is not available in the system
6	Postal code	Postal code check based on country key and region	Specify length with postal code '6'
7	Name	Check entered NAME1, NAME2 exist in SAP -ADRC in table	Same Vendor name already exist in database
8	Street	Check if street 1, street 2 , street 3 against ADRC table in D/B	Same Vendor address already exist in database
		Check if street 1, street 2 , street 3 against /VSDMAG/Zven_hil table in D	Same Vendor name already exist in Staging Area

Master Data Validations 4 Material Master Proof of Concept and scalable for Roll out

Material Master	Data Element	Reason for Exception	Error Message Display
1	Material Type	Material Type shouldn't be blank	Enter a valid Material Type
		Entered Material Type must be maintained in SAP	Enter valid Material Type
2	Product Hierarchy Key	For Material Type FERT Product hier. Key is Mandatory	Please enter valid product hier. Key for Material type FERT
3	Profit Center	Profit center check with division	Please enter valid Profit Center for Division
		Profit center check with plant	Please enter valid Profit Center for Plant
4	Description	Semantics/ Spaces and Special Characters in the Description	Entered Description is already exist in Staging area
			Entered Description is already exist in SAP
5	Material	External Material Uniqueness check	Material Already exist in Staging area
			Material Already exist in SAP
6	Part Number	if Part number exist in Staging area and/or in SAP Need to display Error Message	Part number exist in Database for Material
			Part number exist in Staging Area for Material
7	Gross weight/Net weight/Volume	Gross weight/Net weight/Volume must be Maintained in SAP	Please enter valid Gross weight for Material
			Please enter valid Net weight for Material
			Please enter valid Volume for Material
8	Size / Dimensions	Size/Dimensions must be maintained in SAP	Please enter valid Size/Dimensions for Material
9	Material Group	Material Group must be maintained in SAP	Please enter valid Material Group
10	Old Material	Old Material Uniqueness check	Old Material Already exist in Staging area
			Old Material Already exist in SAP

DMAG™

Value Proposition

DMAG Value is demonstrated beyond MDM and Cleansing

Functionality

1. Data Cleansing
2. *Data Audits and Diagnosis*
3. *Web Interface for Data Capture (Customer, Vendor, Material, etc)*
4. Proactive Data Validations
5. Work Flow Approvals
6. Supports mapping, transformation & conversion while migrating from ECC or Non-SAP systems (MS/ Oracle / JD Edwards, etc.) to S/4 HANA
7. Data Inconsistencies report during migration between source and target S/4 HANA systems
8. Ongoing Data Quality Metrics & Data Governance Framework

Value

- 100% Error Free Data and Secure Capture
- Reliable and Scalable solution for additional Scenarios
- Digitization of MDM Process
- High quality Product Information Management (PIM)
- The effort and timeline reduced by HALF – Upto 50% overall effort reduction
- Speed to Master Data Implementation by 50 - 60%
- Optimizes Master Data Stewards FTE – ON GOING - 60% FTE Synergy Savings
- Data Carve outs for Non-Productive data

Note: DMAG is Perpetual - can be used in SAP ECC or S/4 HANA all Versions